



# Lifestyle Cabinetry

*Your Personal Space Defined*



# Endless Possibilities

Our dynamic designs and high quality craftsmanship can go anywhere your imagination takes you. Whether it's a kitchen, bathroom, home office or media center, we'll help you create a living space that is rich in details and reflects your personal style.

Form No. 1099 12/10



© 2010 Conestoga Wood Specialties Corporation Printed in U.S.A. All rights reserved.



# The Heart of Your Home

Creative concepts, quality Craftsmanship and superior design are all key ingredients required to turn an ordinary idea into an extraordinary kitchen. As the centerpiece of today's home, the kitchen is the real "family room". It's a meeting place for friends, a culinary arts studio and a craft center for the kids. Combine practical design and unique custom features to create that kitchen that is both functional and beautiful.

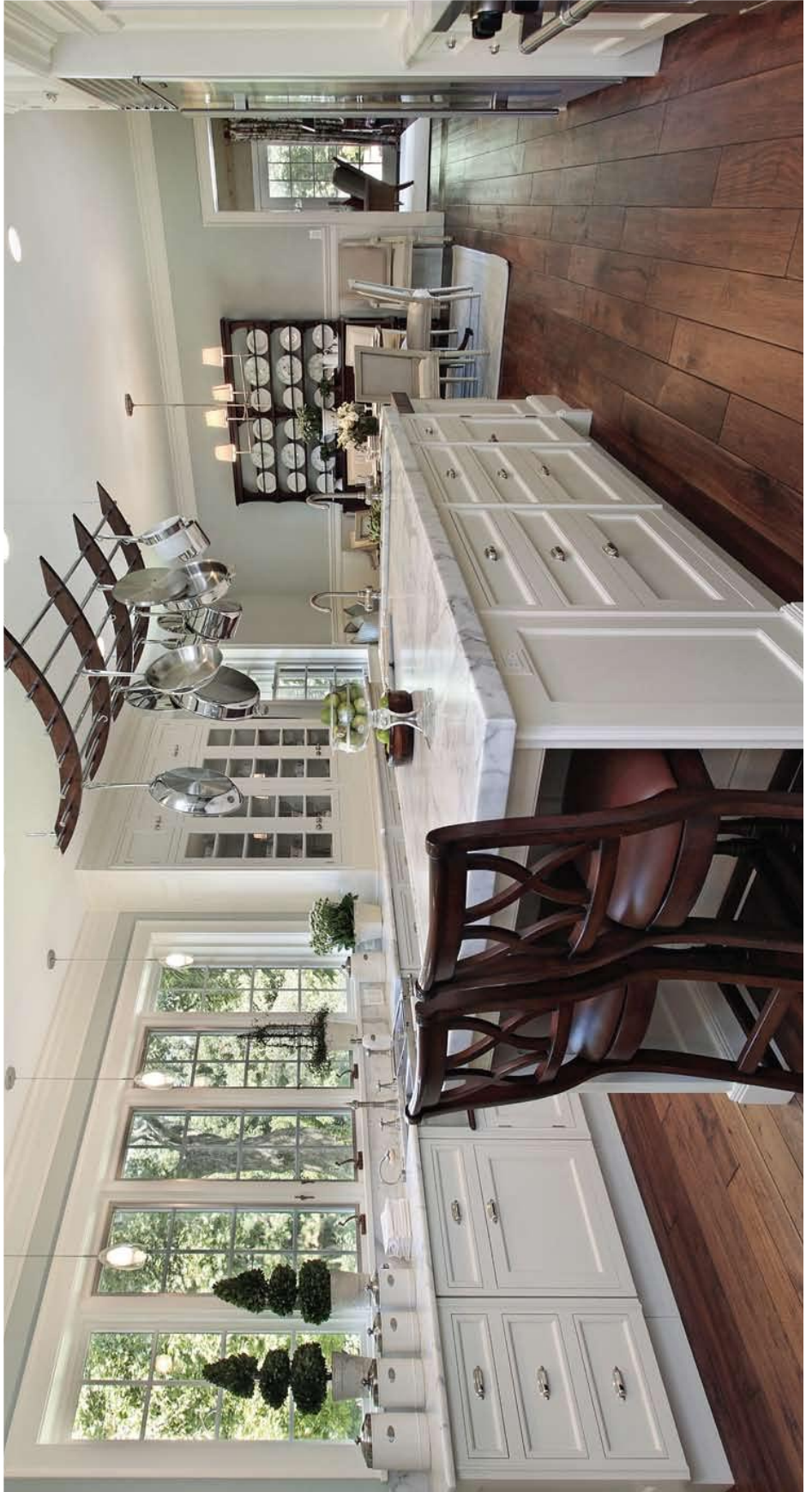
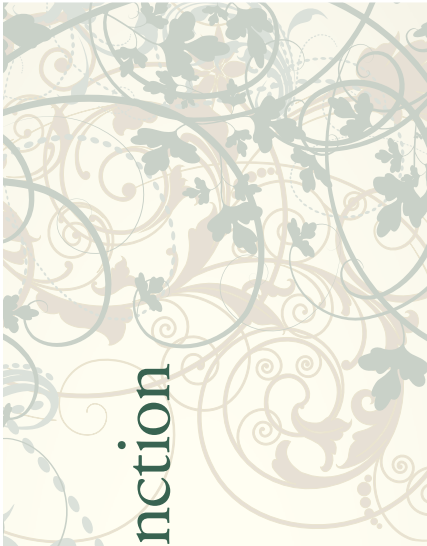


Top: Astoria door and drawer front designs in Hard Maple finished in natural. Inset: 1/4" beaded frame with CRP-10 door designs in Paint Grade Hard Maple finished in Sage Colourtone. Right: Madison door designs with wide framing option in Cherry finished in Espresso wiping stain and Sable glaze. Custom Island in White Oak finished in a custom wiping stain. Front Cover: CRP-10 door and slab drawer front designs in Cherry finished in Natural and Brown glaze.



# Where Fashion Meets Function

Create a space that is comfortable, inviting and dynamic. Nature inspired colors or painted finishes; whatever your preference, kitchen cabinetry sets the tone for your entire living space. We offer masterfully crafted designs in a variety of styles and colors in order to reach that perfect balance of aesthetics and functionality. Create a dream kitchen that emphasizes your personal taste and enhances the charm and value of your home.



Top: TW-10916 door and drawer front designs; wall cabinets in Paint Grade Hard Maple finished in Crystal White Colourtone and base cabinets in Hard Maple finished in Colonial wiring stain.

Inset: CPP-10 door and drawer front designs in Cherry finished in Harvest Gold wiping stain and Sable glaze.

Left: CPP-10 doors and custom inset drawer fronts shown in Paint Grade Hard Maple finished in Frosty White Colourtone.



# Structure that's Smart and Stylish

Your kitchen should be as effective as it is attractive. Explore your options with a limitless array of intelligent, practical solutions that maximize space, provide easy access and create a natural flow to your daily routine.

**Worktable:** (Top left) Accentuate your kitchen with free-standing work tables, perfect for island or prep station applications.

**Mixer Lift:** (Top right) Accessory items, such as mixer lifts, provide easy and convenient access and supplemental work space.

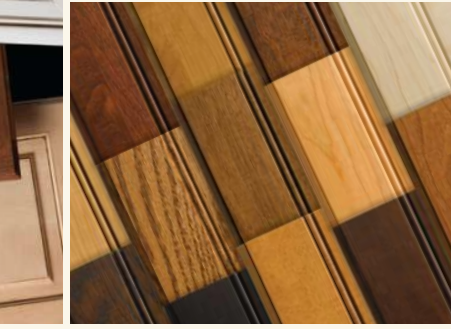
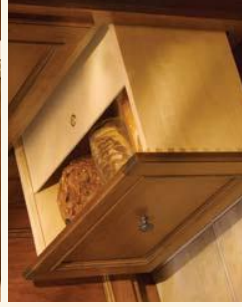
**Sliding Cutlery Tray:** (Middle left) Handcrafted wooden cutlery dividers maximize your drawer storage potential.

**Pull-out Storage Unit:** (Middle right) Practical, yet decorative storage solutions come in the form of wall, base and vanity pull out units.

**Pull out trays:** (Bottom left) Sturdy pull out trays offer easy access and optimum use of storage space.

**Bread Box:** (Bottom right) Drawer boxes with bread box lids keep your baked items and snacks fresh while decluttering counter space.

**Spice Drawer Insert:** (Bottom right) Spice drawer storage puts seasonings at your fingertips while freeing valuable shelf space.



**Mouldings and accents:** (Top left) Mouldings, trim and accent pieces are the finishing touch to "crown" your cabinetry. Complimentary elements such as architectural mouldings and face treatments are available to match your design and style.

**Mullions/Glass/Matching Interiors:** (Top right) Define a focal point in your space with mullion doors, decorative glass and matching specie interiors.

**Door Styles:** (Middle) From simple to elegant; casual to formal, choose the door design that best represents your personal style and taste.

**Wiping Stains:** (Bottom left) Enhance the natural beauty of wood with hand applied wiping stains.

**Colourtone Finishes:** (Bottom right) Introduce color or use it as an accent; painted finishes create a palette of endless design possibilities.

**Back Cover (top):** CPP-101728 door and drawer front designs in Paint Grade Hard Maple finished in Crystal White Colourtone with Coffee glaze.

**Back Cover (bottom):** Amesbury door and drawer front designs with wide framing option in Hard Maple finished in Espresso wiping stain.